

Applying analytics and microstats to NCAA hockey

Timo Seppa

Ottawa Hockey Analytics conference

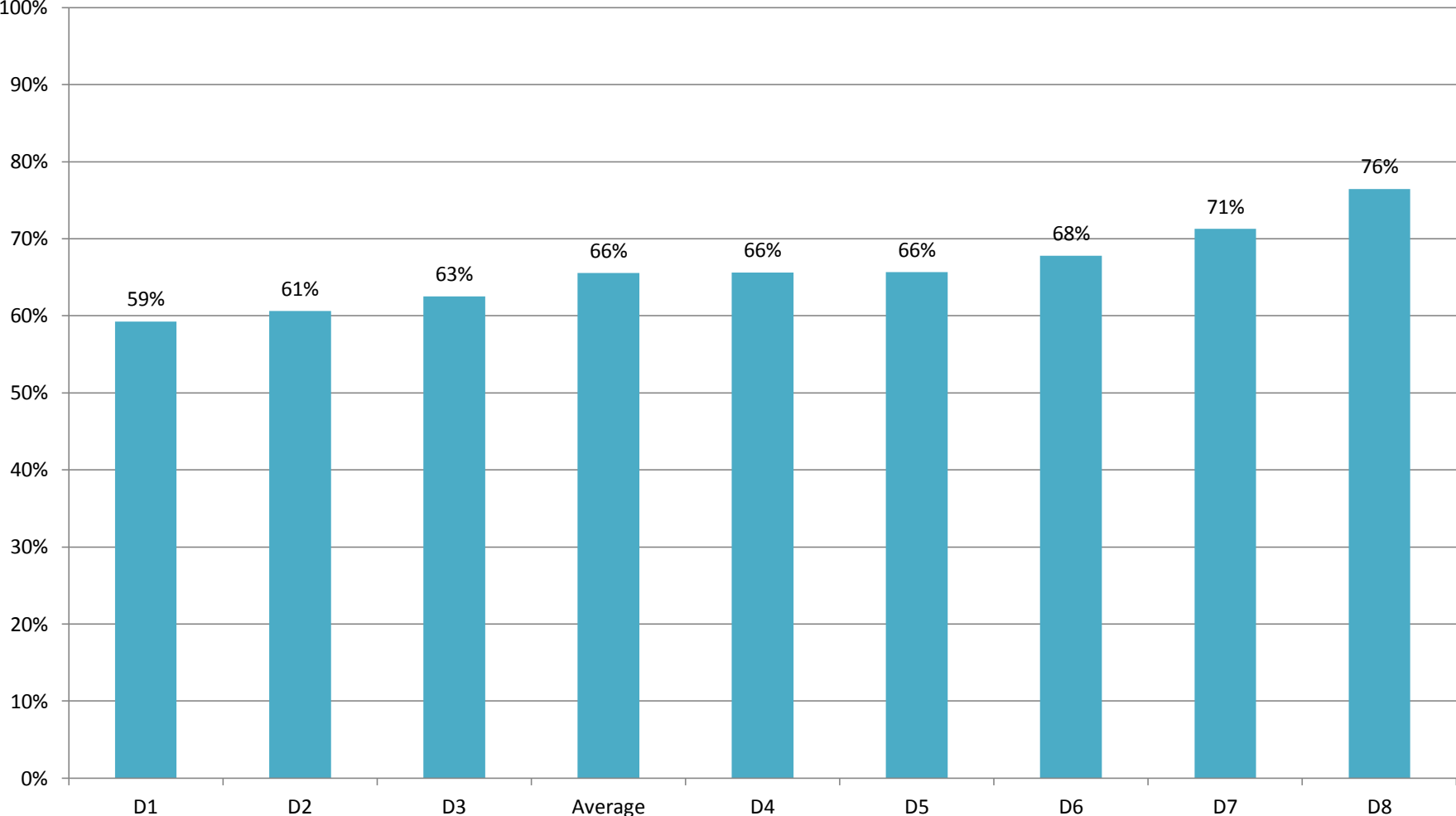
February 7, 2015

These examples come from having tracked games of **Quinnipiac University** for the 2014-15 season

Individual and pairing ZED

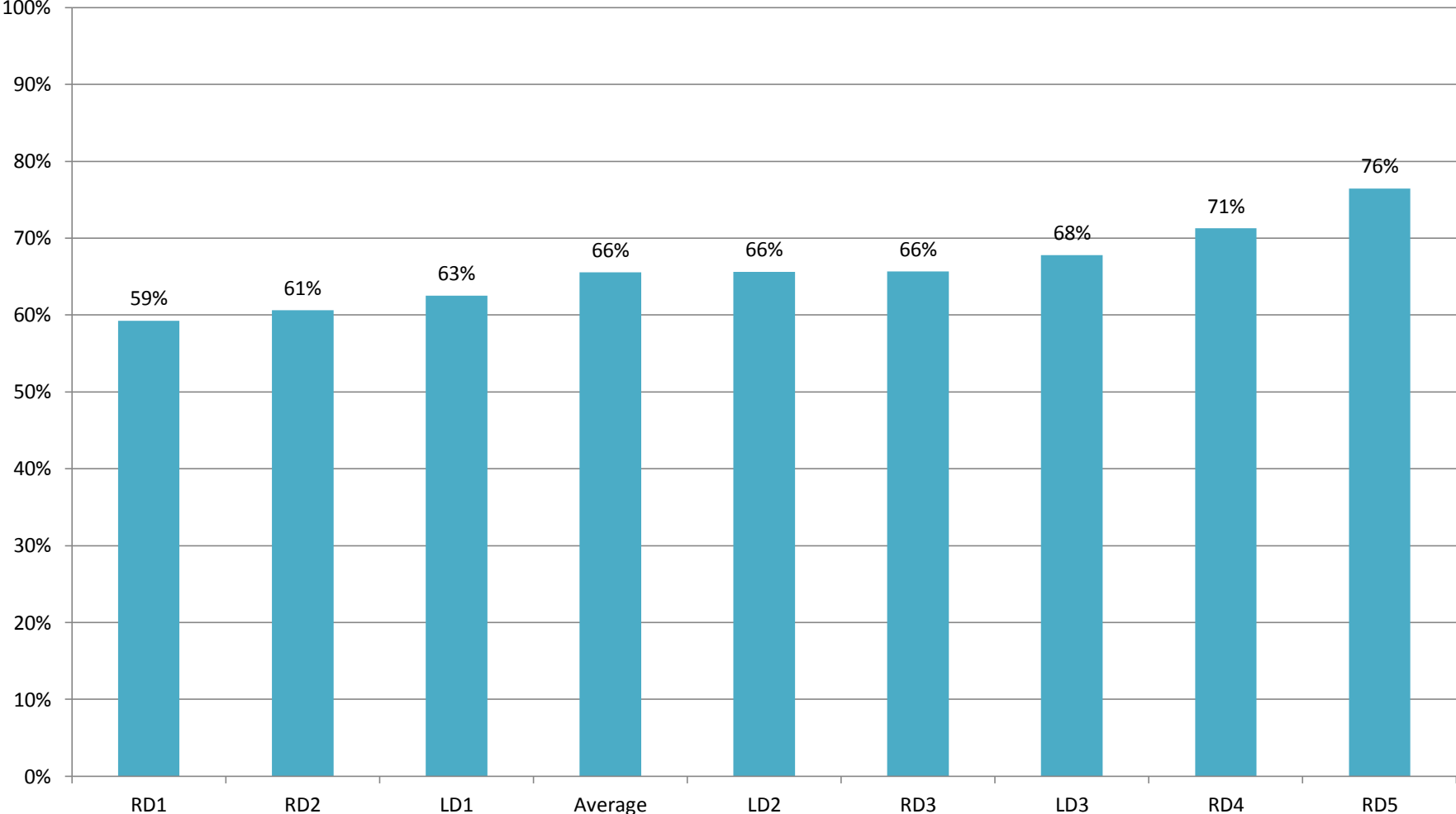
Individual zone entry defense (ZED)

ZED% for defensemen (higher = better)



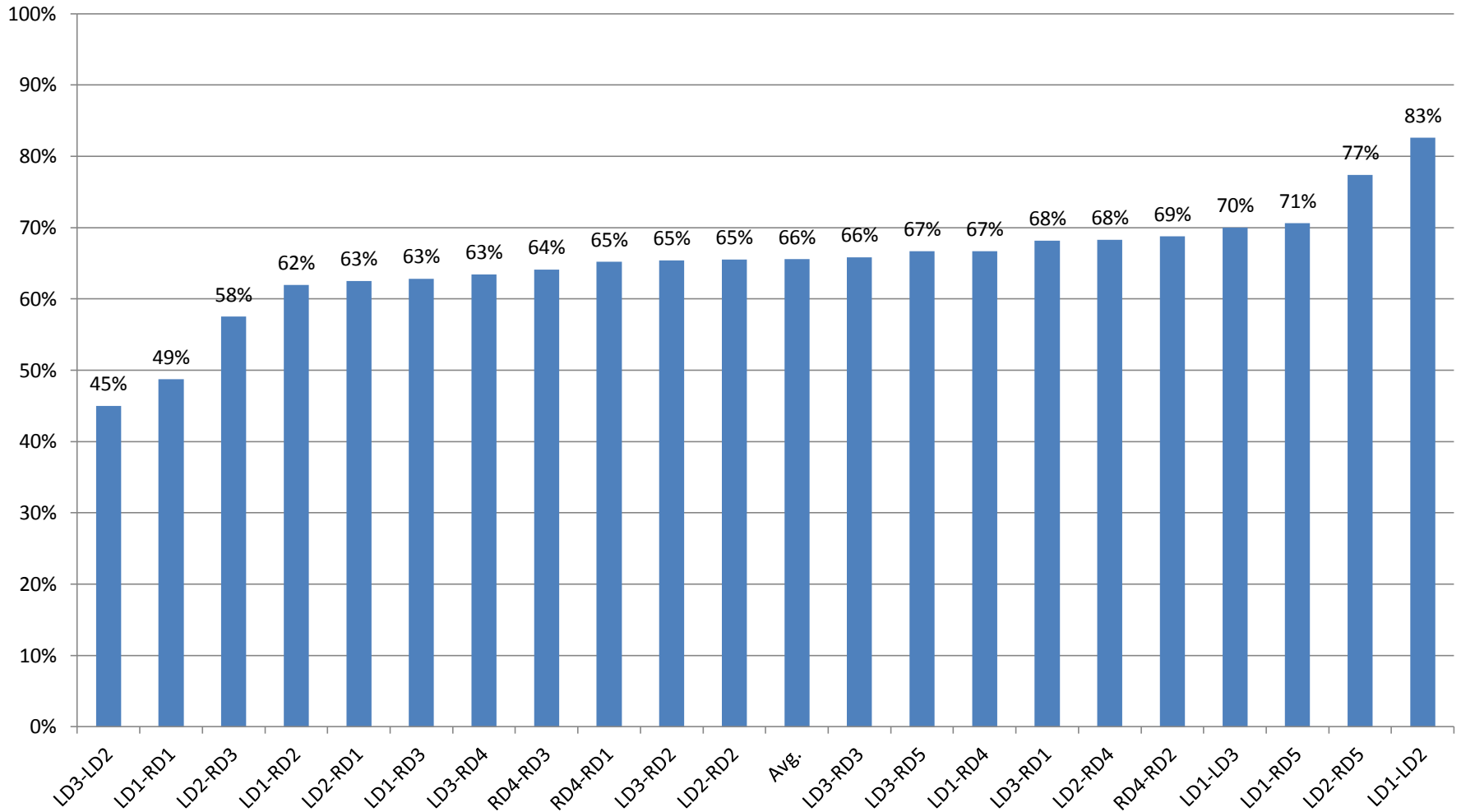
Is it enough to just track individual D?

ZED% for defensemen - (higher = better)



D partner has impact on “targeted D”

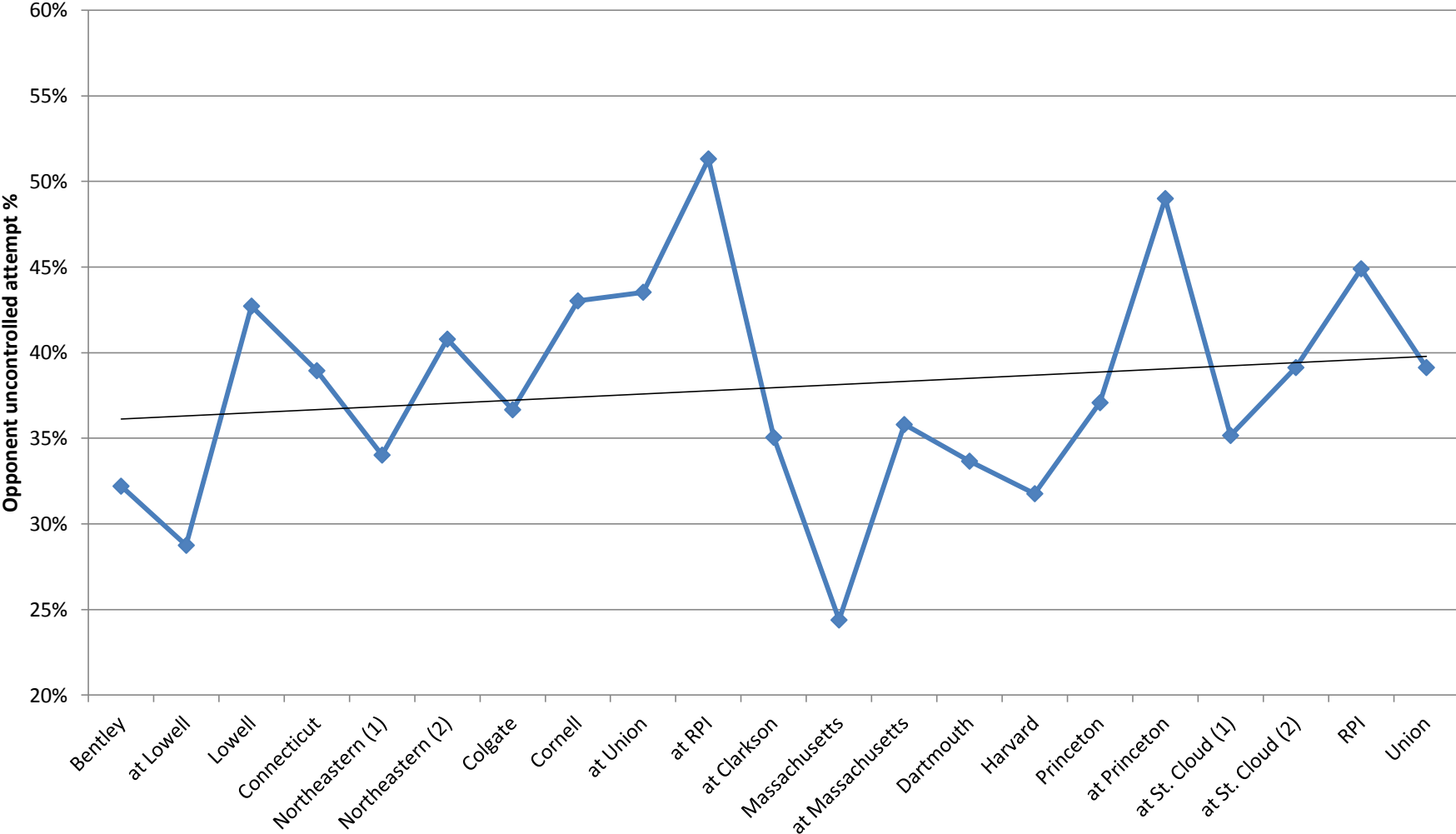
ZED% for common pairings (higher = better)



Team success at ZED

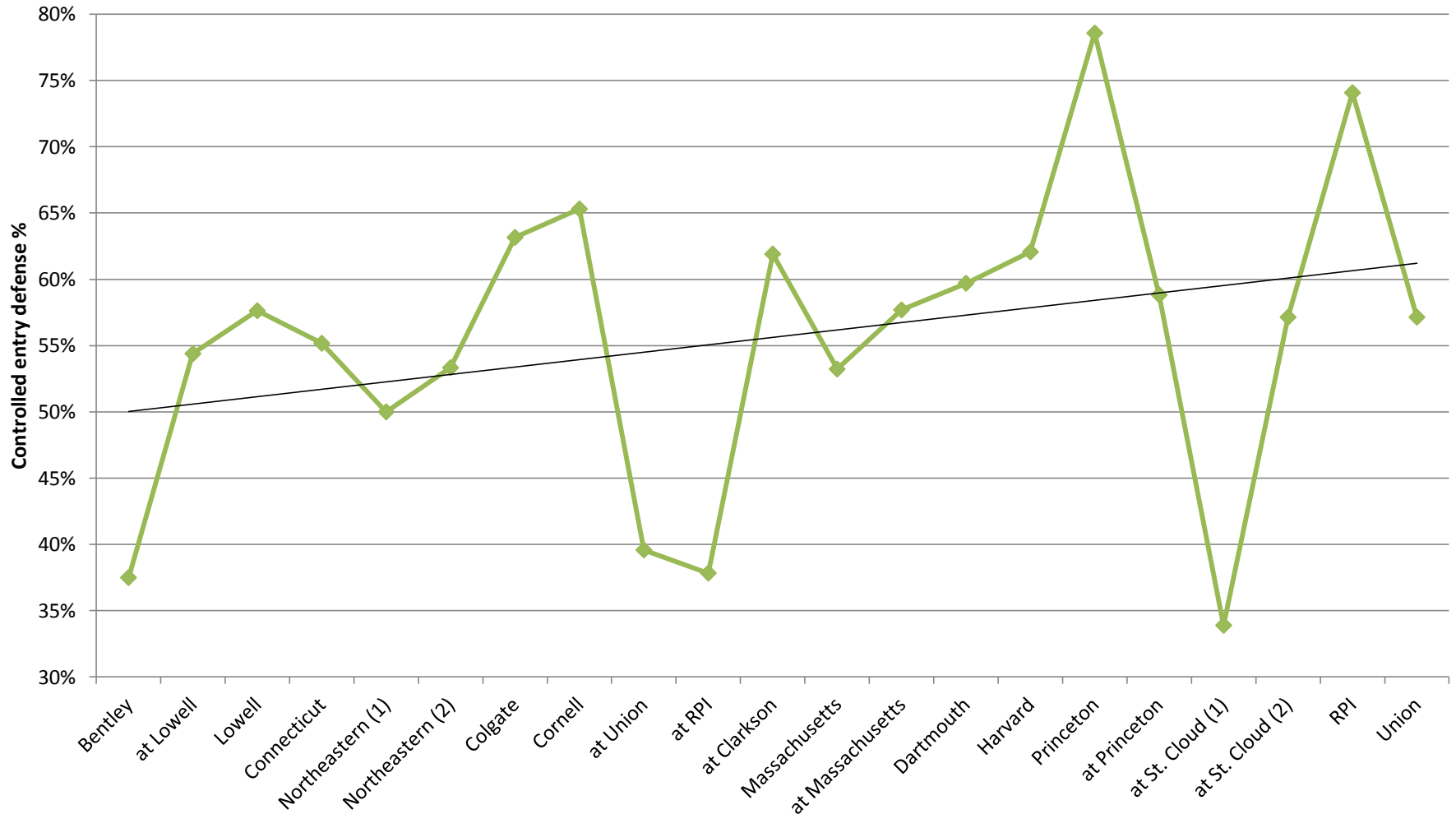
Team success at forcing dump and chase

Opponent uncontrolled attempt % (higher = better)



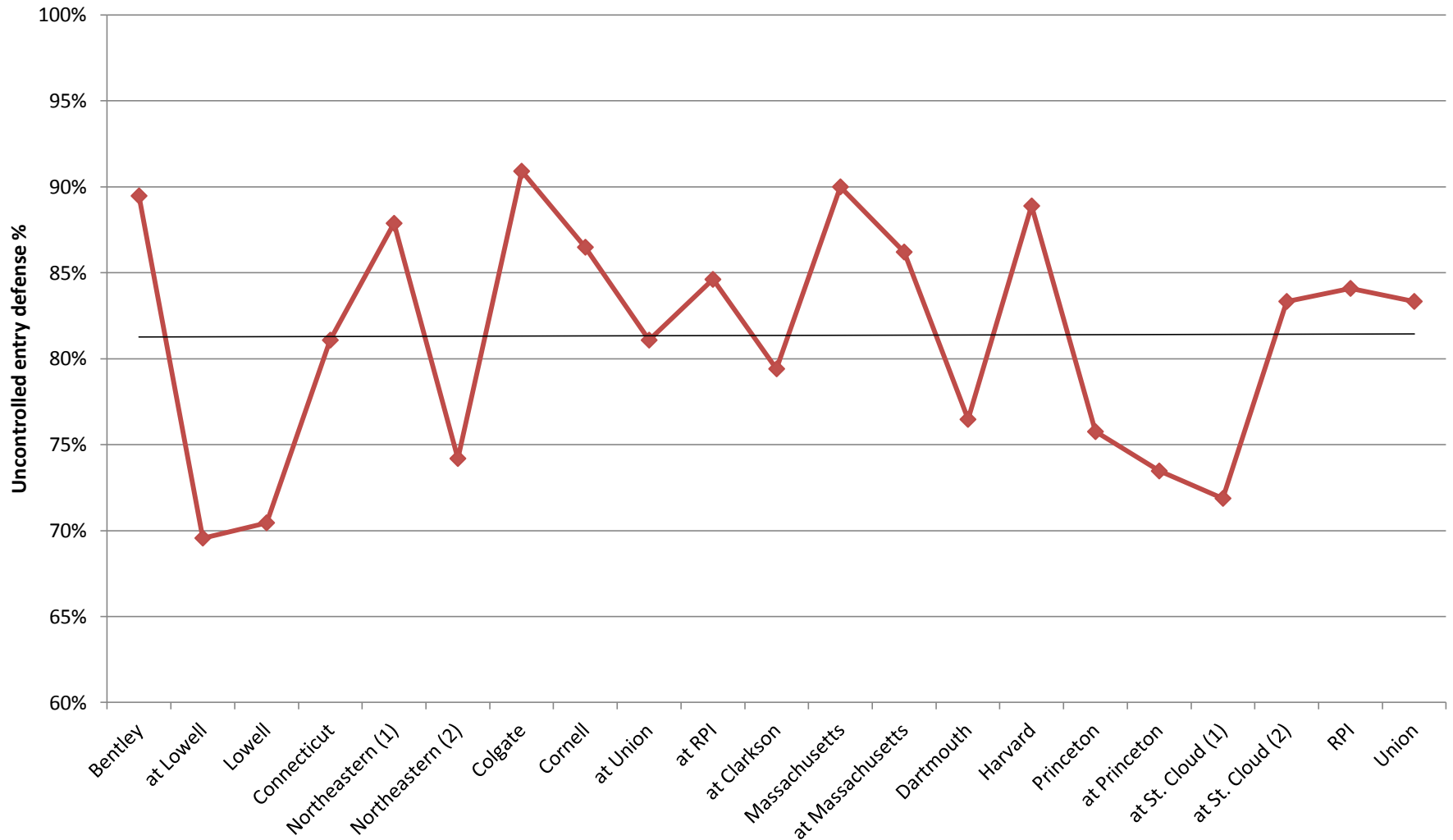
Team success at stopping controlled entries

Controlled entry defense % (higher = better)



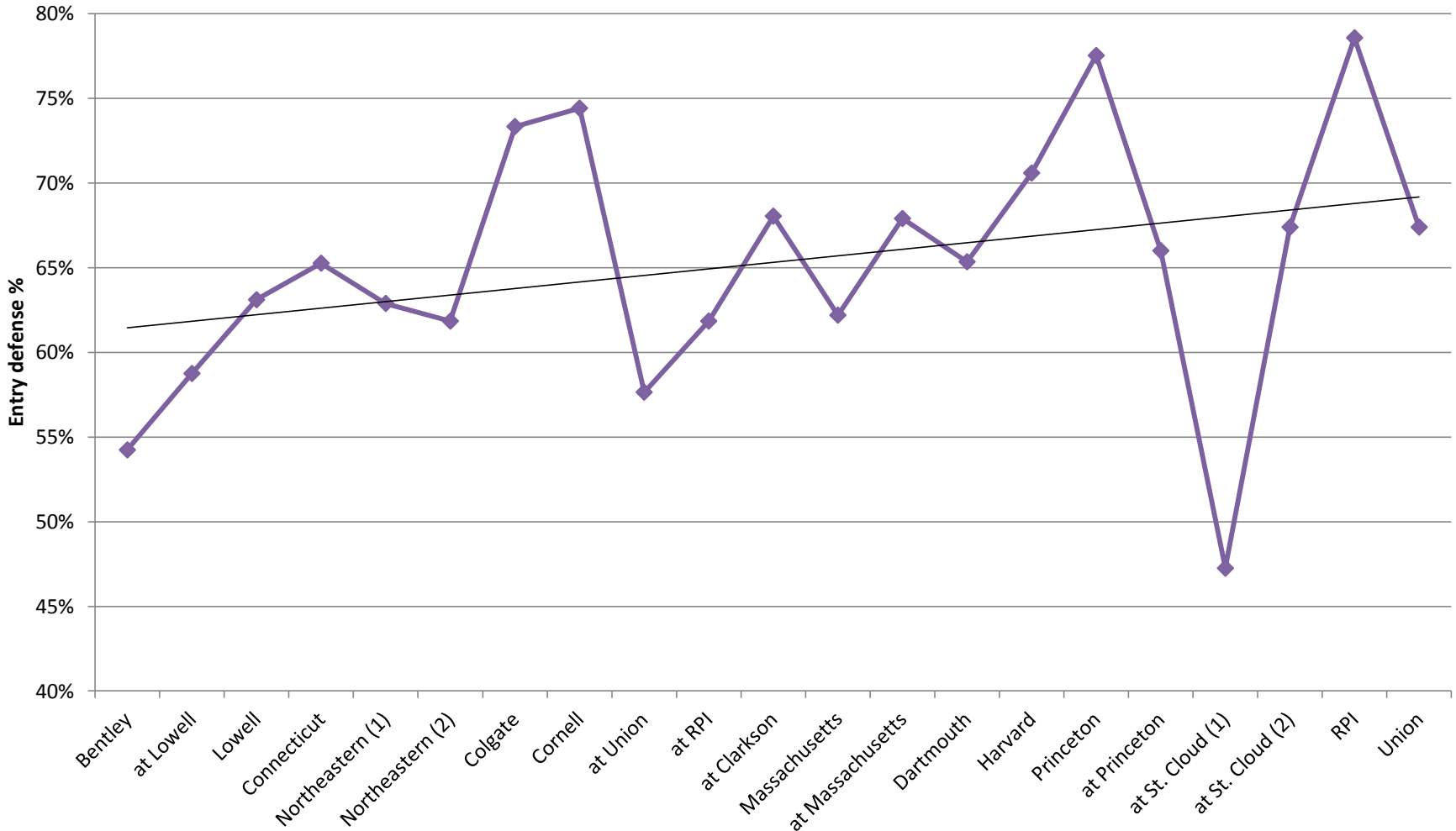
Team success at stopping uncontrolled entries

Uncontrolled entry defense % (higher = better)



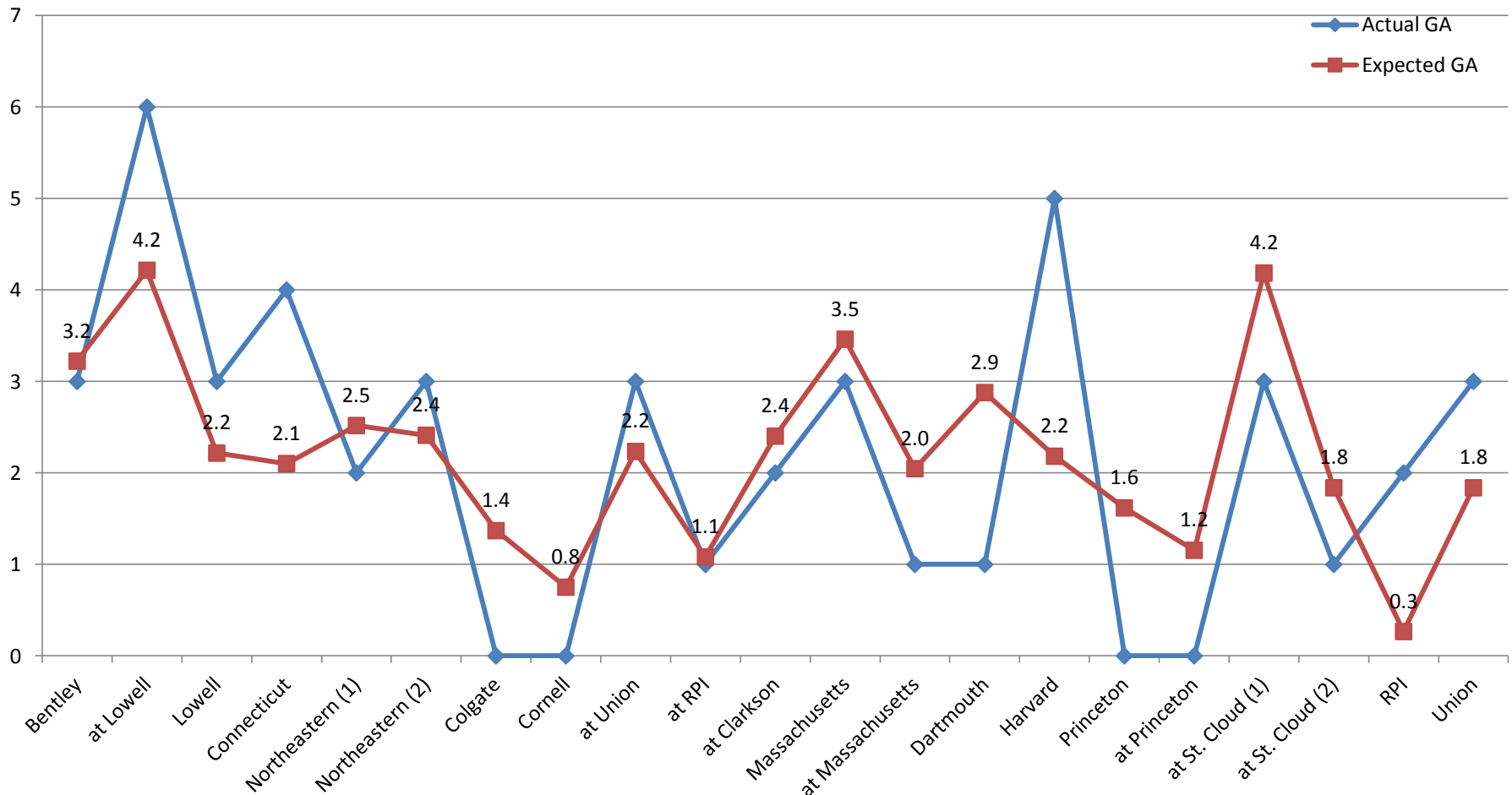
Overall team success at stopping entries

Overall entry defense % (higher = better)



Estimating GA from components of ZED

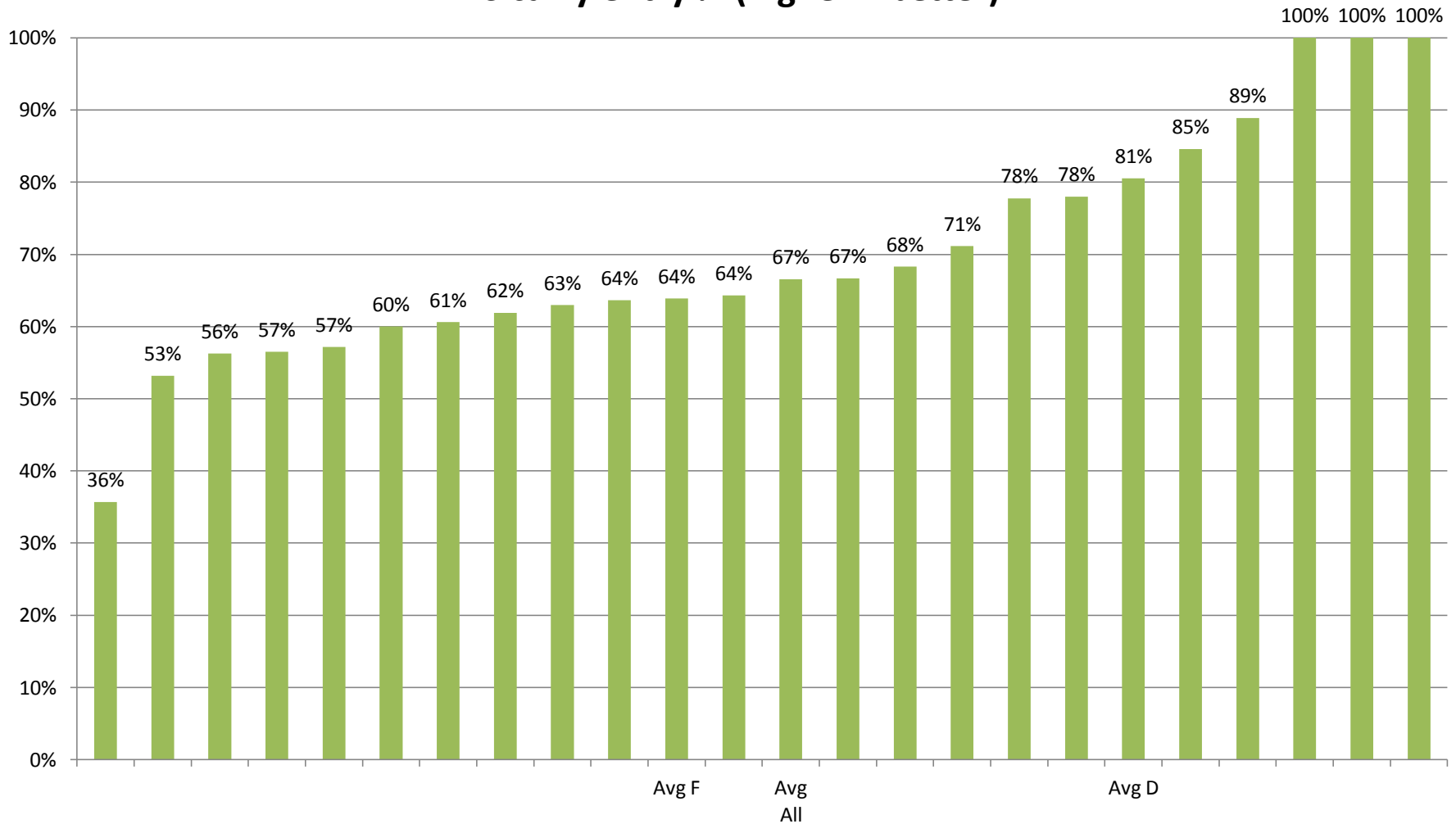
Expected GA based on zone-entry stats only



Zone entries on offense

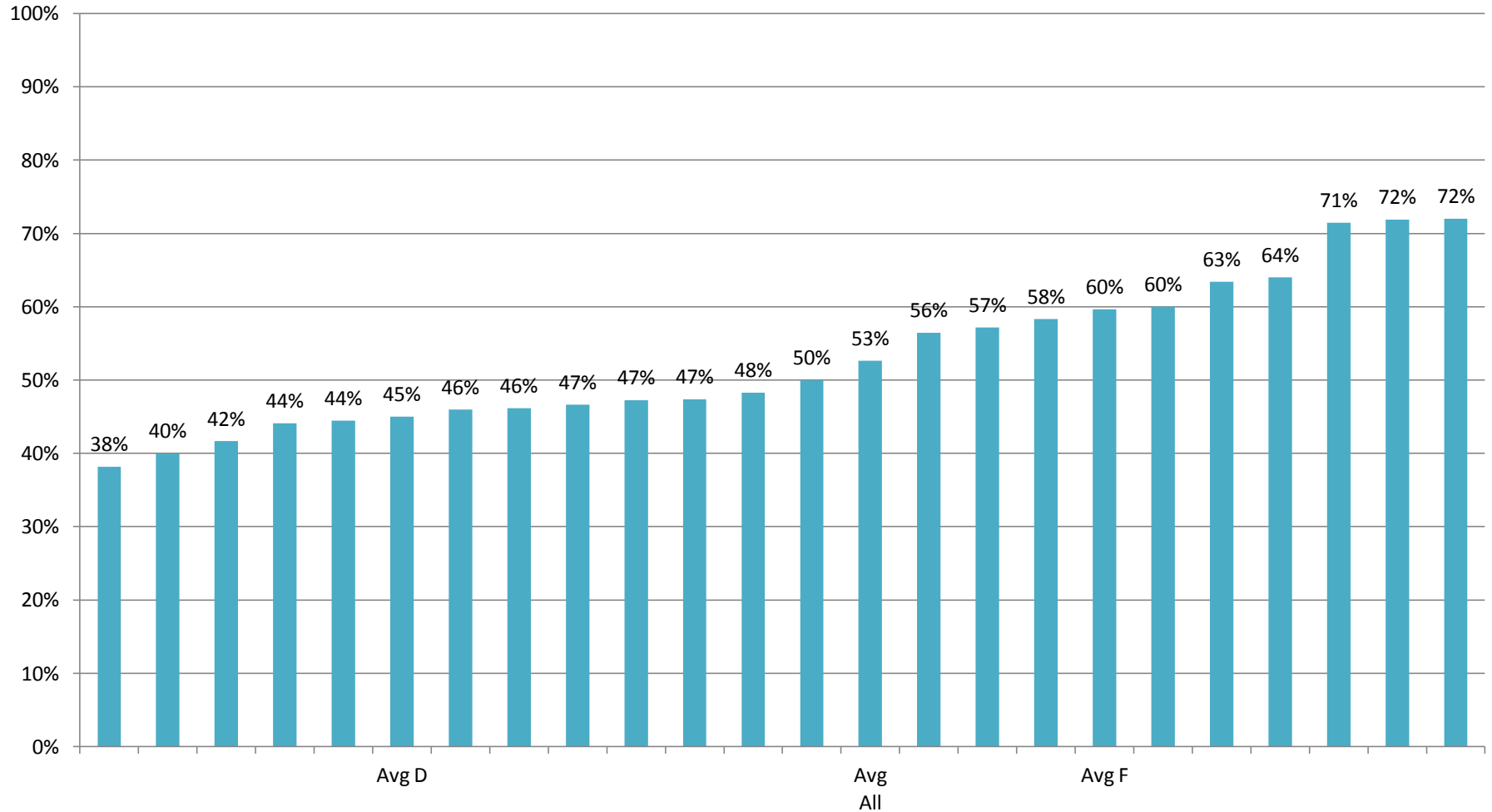
Further splitting entry types: carries

ES carry entry % (higher = better)



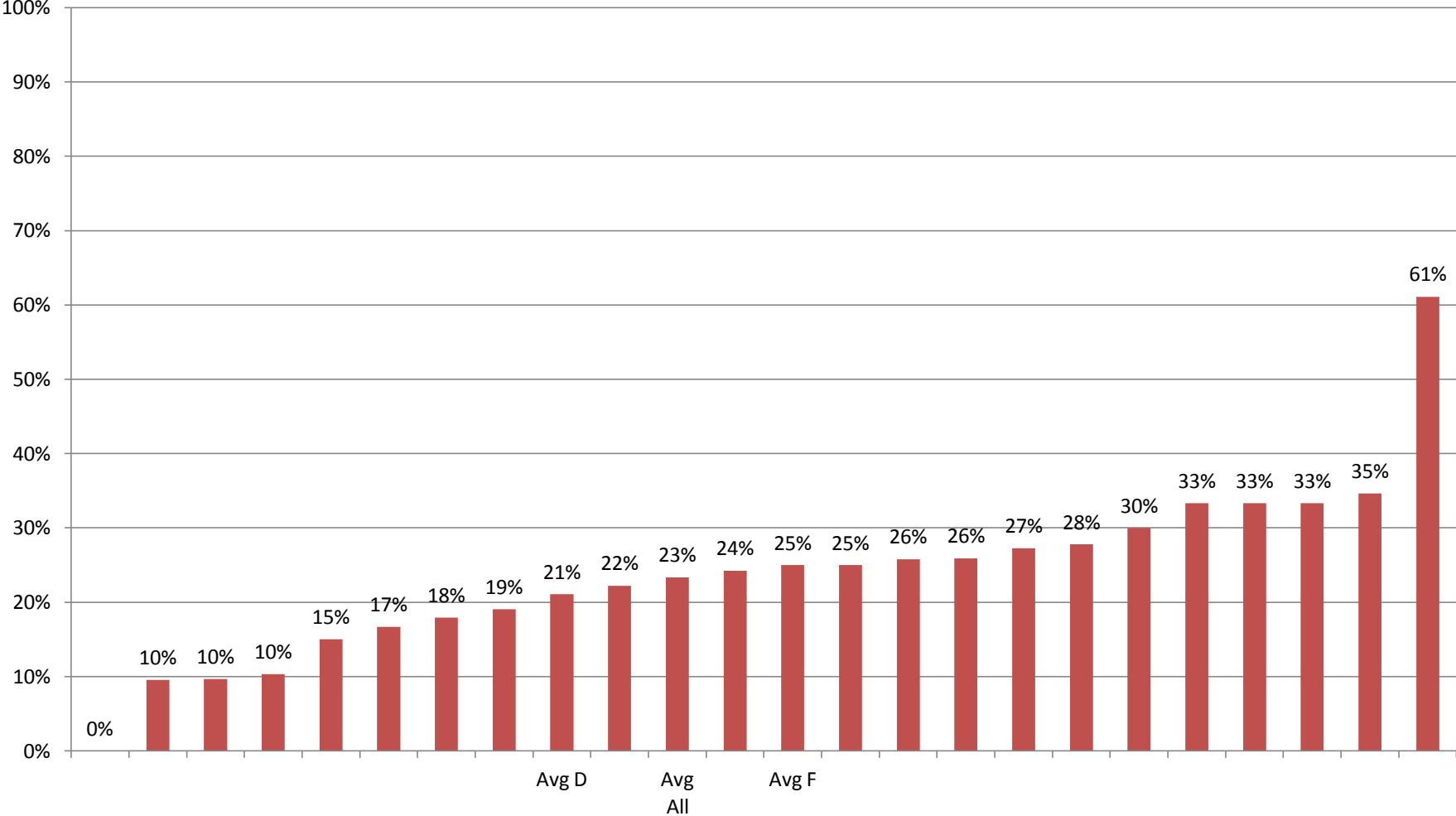
Further splitting entry types: vs. passes

ES pass entry % (higher = better)



Uncontrolled entries: least successful

ES uncontrolled entry % (higher = better)



Entries: overall success

ES total entry % (higher = better)

